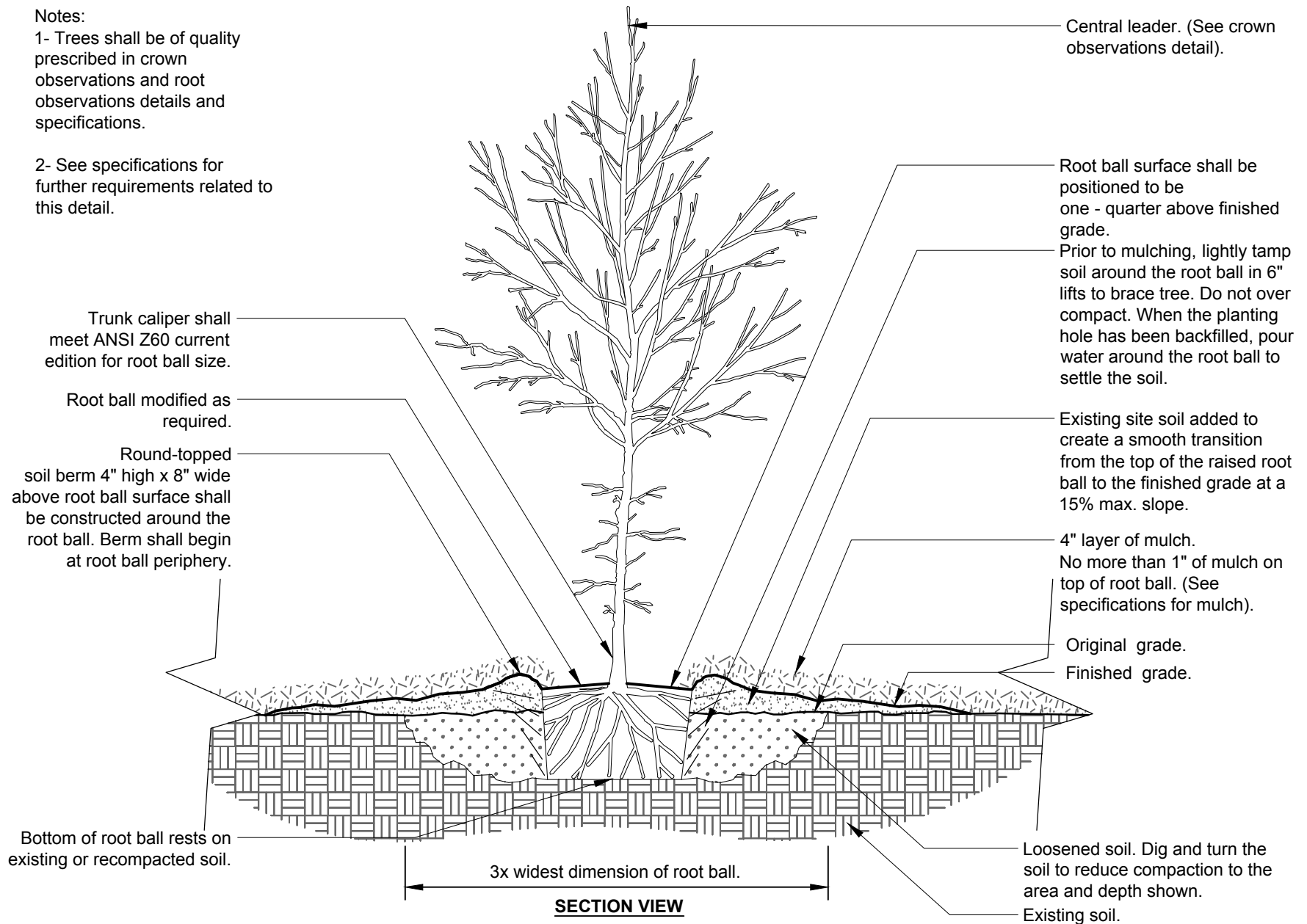


Notes:

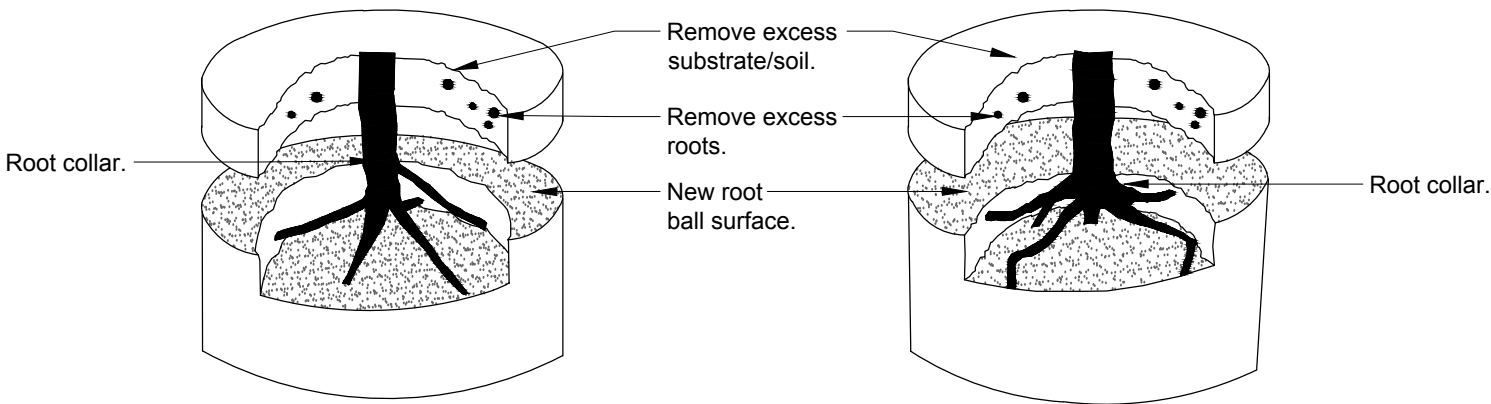
1- Trees shall be of quality prescribed in crown observations and root observations details and specifications.

2- See specifications for further requirements related to this detail.



## TREE IN POORLY DRAINED SOIL

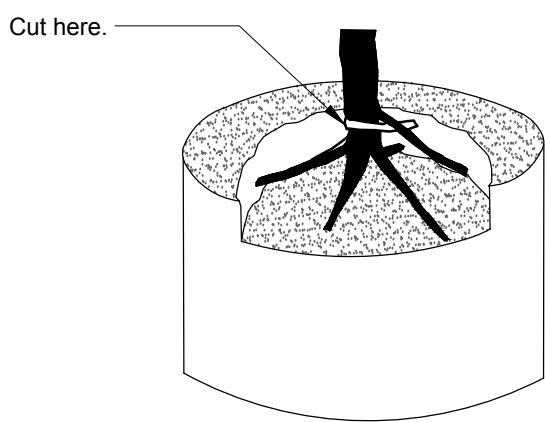
Step 1 - Remove substrate over root collar.



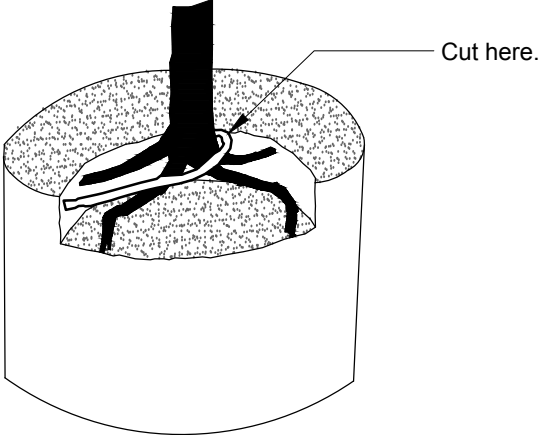
Tree planted too deeply in root ball. Remove excess substrate and roots to meet root inspection detail.

Tree planted too deeply in root ball. Remove excess substrate and roots to meet root inspection detail.

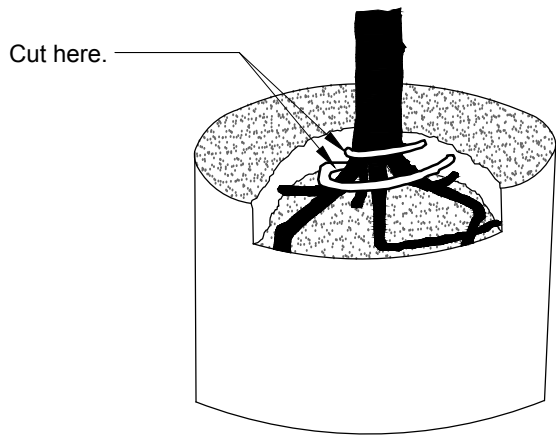
Step 2 - Remove defects.



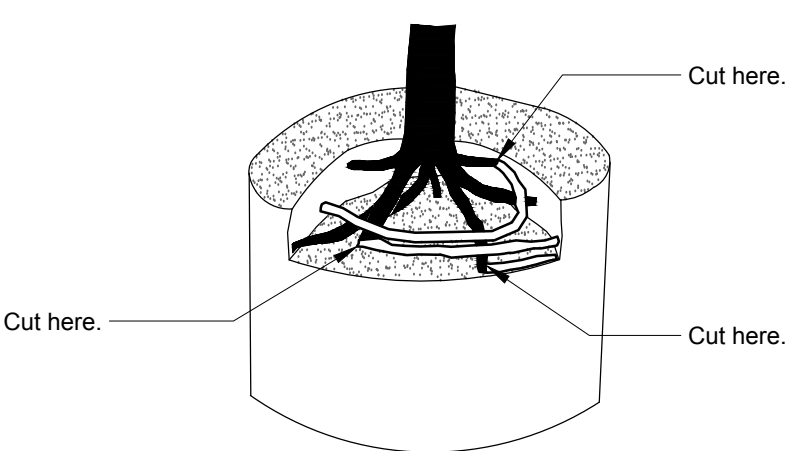
Five structural (large) roots shown in black. Remove structural root (white) wrapping root collar.



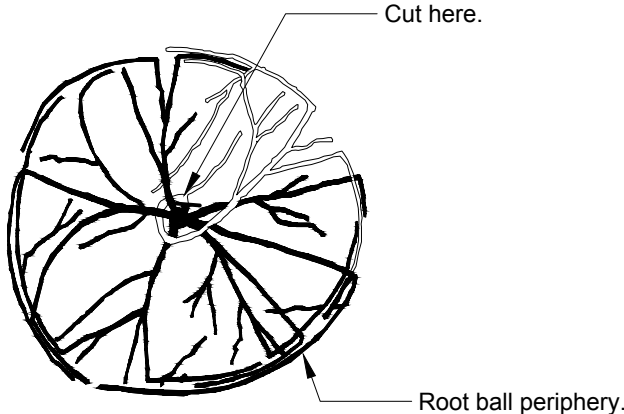
Four structural roots shown in black. Remove root (white) growing over structural roots.



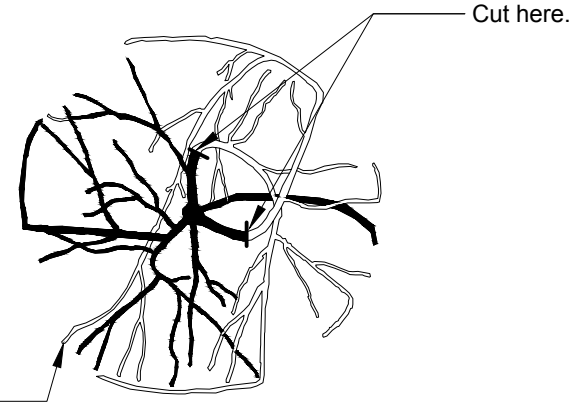
Six structural roots shown in black. Remove roots (white) growing over root collar by cutting them just before they make an abrupt turn.



Seven structural roots shown in black. Remove structural roots (white) growing around or over root collar by cutting them just before they make an abrupt turn.



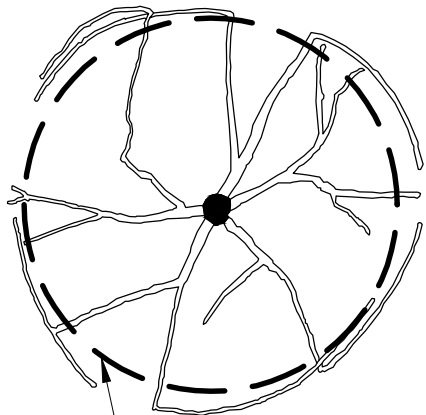
Cut structural root just before it makes abrupt turn. Pruning cut should be made tangent (parallel) to the trunk.



Cut structural roots just before they make abrupt turn by cutting tangent (parallel) to the trunk (two cuts shown).

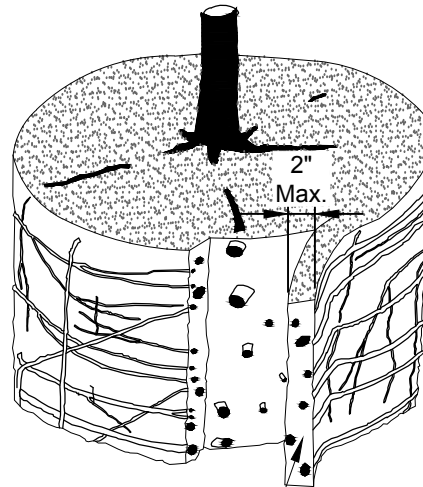
- Notes:
- 1- All trees shown are rejectable unless they undergo recommended correction.
  - 2- First Step 1, then Step 2. Roots and soil may be removed during the correction process; substrate/soil shall be replaced after correction has been completed.
  - 3- Trees shall meet root observations detail following correction.
  - 4- Small roots (1/4" or less) on the periphery of the root ball are common with container plant production. These small roots are not defined as "defects" and can be addressed at the time of installation (See root ball shaving container detail).

### BEFORE SHAVING



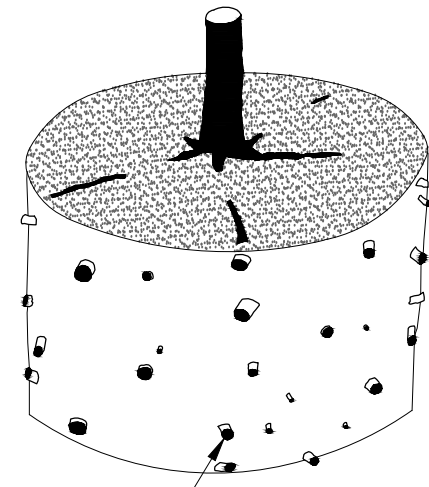
Shave root ball here to remove all roots growing on periphery.

### SHAVING PROCESS



Shave outer periphery of the root ball a maximum of 2" thick.

### SHAVING COMPLETE



Root tips exposed at periphery of root ball. All roots growing around periphery are removed.

#### Notes:

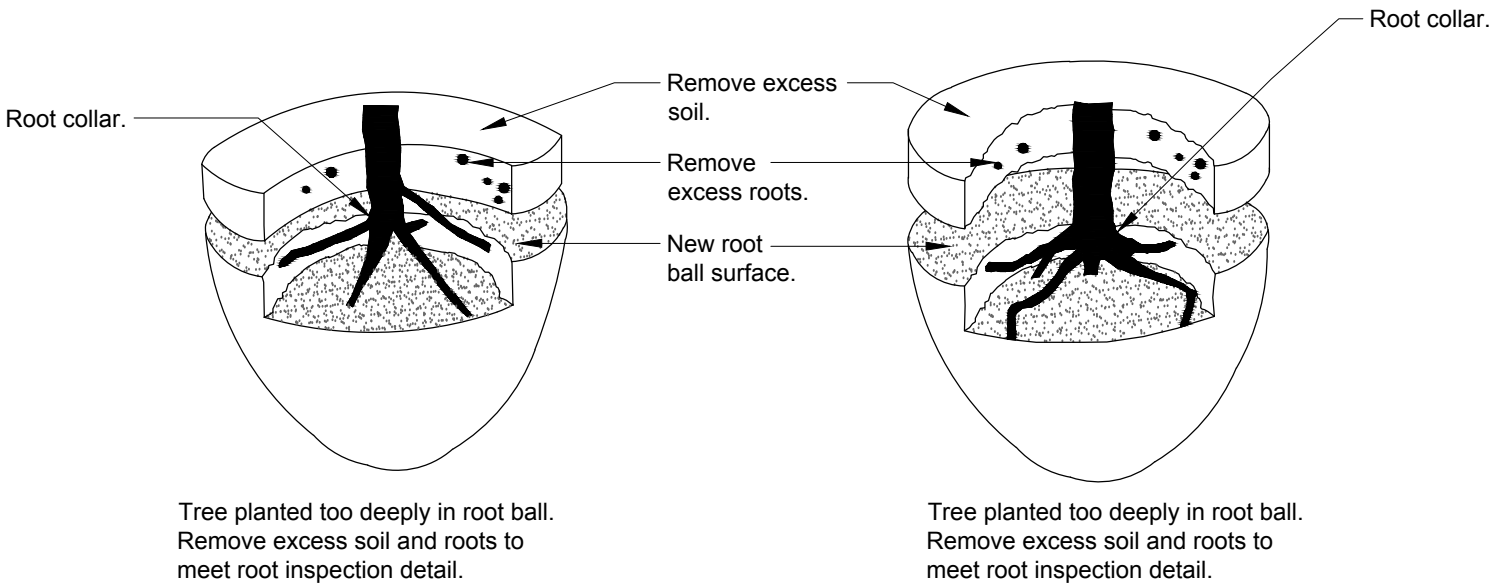
- 1- Shaving to be conducted using a sharp blade or hand saw eliminating no more than needed to remove all roots on the periphery of root ball.
- 2- Shaving can be performed just prior to planting or after placing in the hole.

URBAN TREE FOUNDATION© 2014  
OPEN SOURCE FREE TO USE

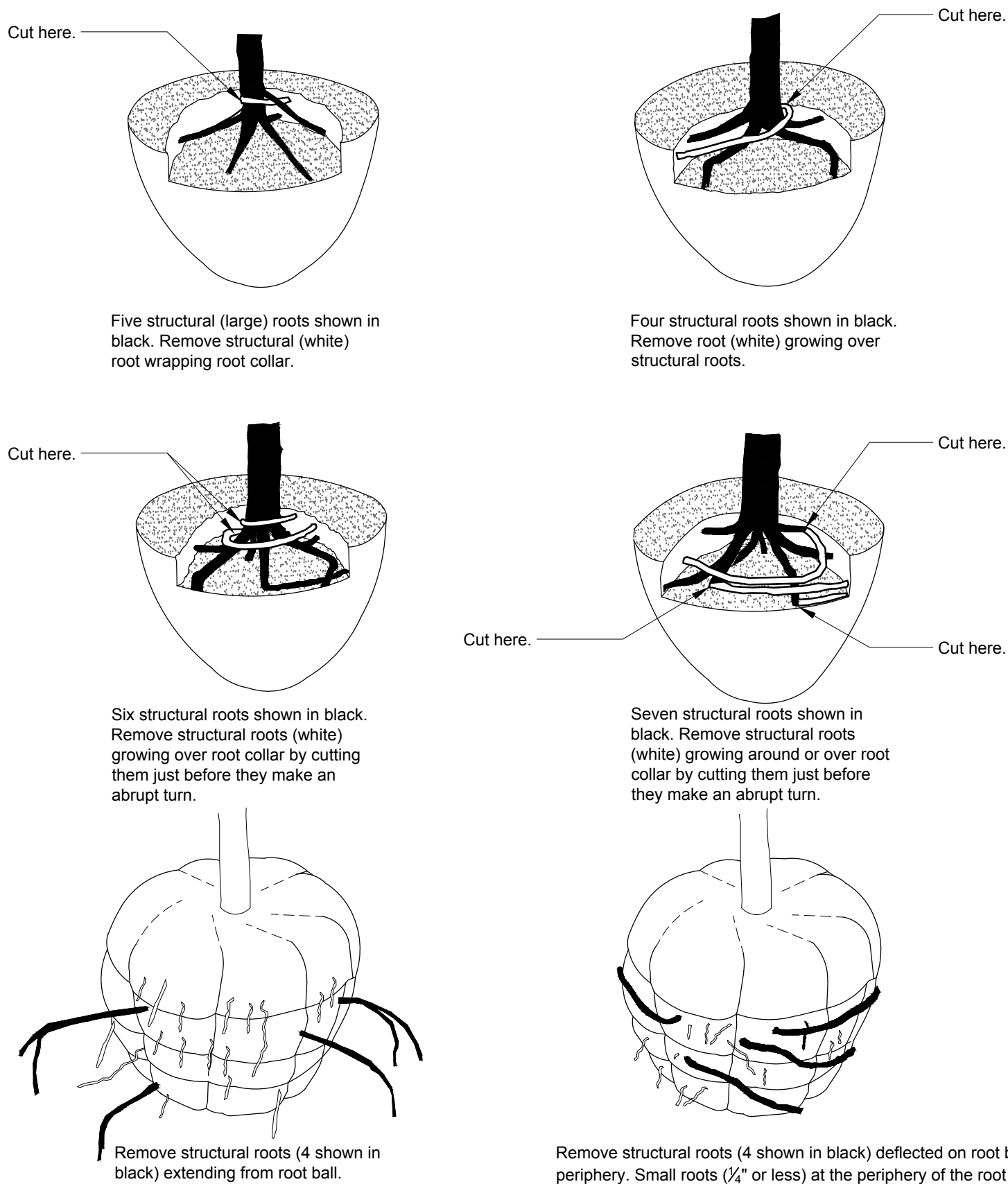


## ROOT BALL SHAVING CONTAINER DETAIL

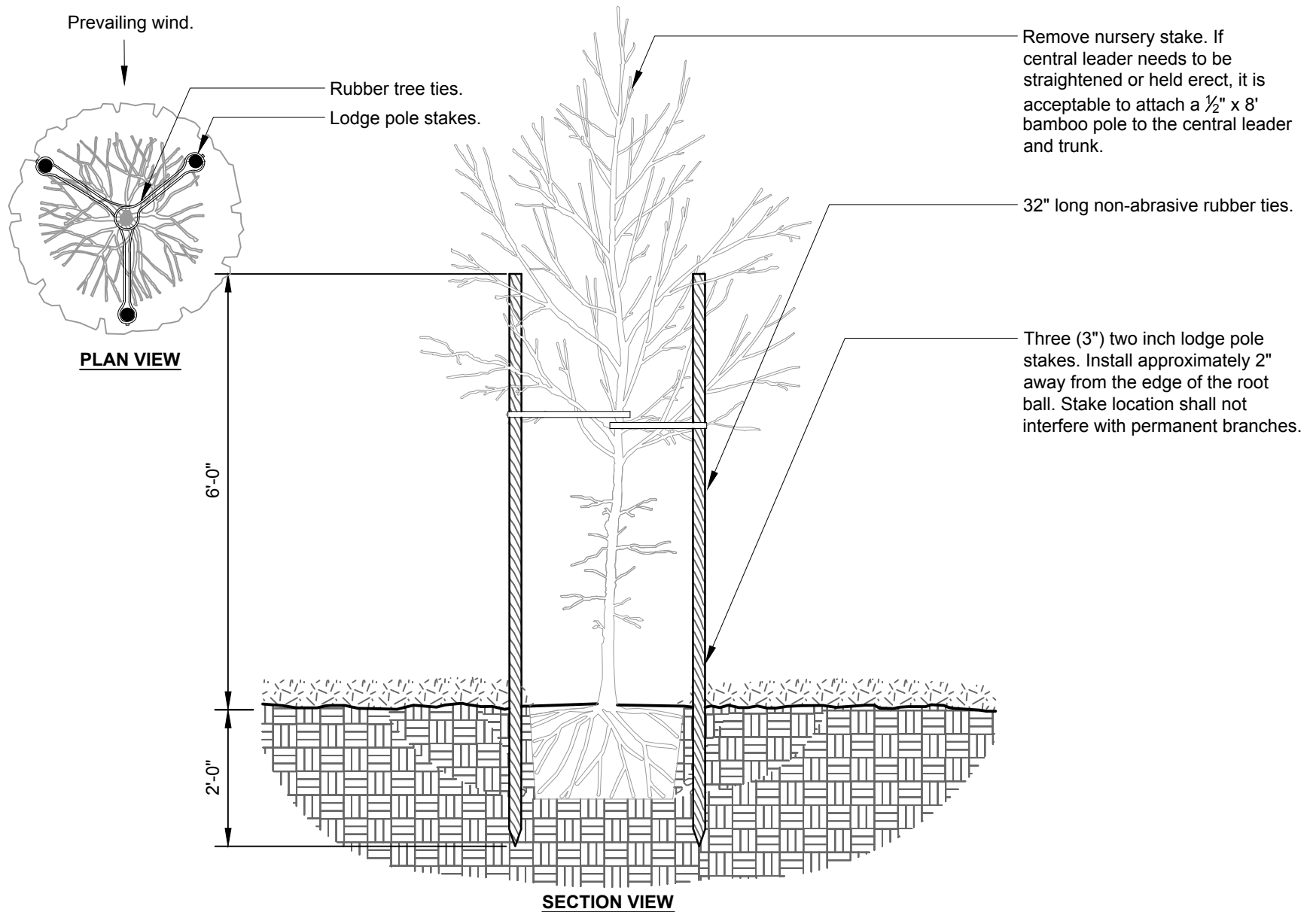
Step 1 - Remove soil and roots over the root collar.



Step 2 - Remove defects.



- Notes:
- 1- All trees shown are rejectable unless they undergo recommended correction.
  - 2- First step 1, then step 2. Adjust hole depth to allow for the removal of excess soil and roots over the root collar.
  - 3- Roots and soil may be removed during the correction process; substrate/soil shall be replaced after the correction has been completed.
  - 4- Trees shall pass root observations detail following correction.



P-X

## TREE STAKING - LODGE POLES (3)

URBAN TREE FOUNDATION © 2014  
OPEN SOURCE FREE TO USE